



Guide
sensmart

APEX
VISION

GUIDE

Easy, Efficient, Extraordinary

EasIR Series Tool-like Thermal camera

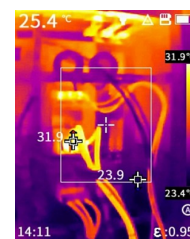
Introduction

EasIR Series tool-like thermal camera provides two configuration options of 120x90 and 256x192 IR detectors. It adopts the new real-time IR-Perfclear technology to enhance the details and reduce noise of the image and present a clearer image in real time. Equipped with a series of professional functions such as 2MP visible light camera, video streaming and recording, WIFI, and OTA upgrade, etc., EasIR Series brings a clearer, more powerful and smoother work experience for users.

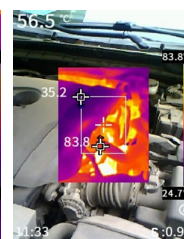
Features

- High-sensitive infrared detector, resolution 120x90/256x192
- Real-time IR-Perfclear technology, 4 times better image quality
- -20°C~550°C wide temperature measurement range, automatic switch
- Photo and video recording, convenient sharing via mobile APP
- Video streaming, real-time data transmission with PC analysis software
- OTA firmware upgrade to keep the device up-to-date

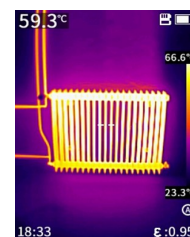
Applications



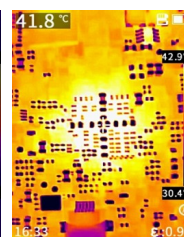
Electrical Application



Facilities maintenance



HVAC Inspection



PCBA detection

Specifications

Product model	E2S
Imaging and optics	
Detector type	VOx, 7.5 to 14μm
Infrared resolution	256×192@12μm
Super resolution	Support real-time super-resolution reconstruction, Upgrade to 512×384
NETD	15mK
Frame rate	25Hz/9Hz
Focal length	3.2mm
Field of view	56°×48°
IFOV	3.75mrad
Min. object distance	0.1m
D:S	266:1
Focusing mode	Focus-free
Measurement and analysis	
Measurement range	Support auto-switching: -20°C to 150°C, 0°C to 550°C
Measurement accuracy	±2°C or ±2%, whichever is greater
Analyzed target	Center spot; Three Fixed Areas: Small, Medium, Large (Alternative)
Alarm	Full screen temperature threshold alarm (image and flash)
Parameter settings	Emissivity, reflected temperature, target distance
Image display	
Display screen	2.4" LCD
Image mode	IR, VIS, MIF and PIP
Color palettes	6: Iron Red, White Hot, Arctic, Rainbow 2, Hot Iron, Rainbow 1
Image adjustment	Level span mode: Automatic, Semi-automatic, Manual
Digital camera	2MP
Functions	
Laser	Laser Indication
Recording function	Photo and Video
Storage and transmission	
Storage media	Built-in (16 GB)
Image storage	JPG with temp info
Video storage	Supports real-time video streaming, video storage format in Irgd (with temp info)
External interface	USB-C, Tripod socket
WIFI	Yes, it can be connected to the mobile terminal for image and real-time video transmission
Power system	
Battery type	Rechargeable lithium-ion battery, non-removable
Operating time	11 hours
Charging mode	USB-C charging; PC/portable charger; Capable of charging while using
Charging time	90% of full charge in 2.5 hours
Environmental parameters	
Working temperature	-15°C to 50°C
IP rating	IP54
Drop	2m drop test
Certification	CE, FCC, RoHS, KC, EAC, FDA, Anatel, IP54, 2m drop test, Damp heat test, Vibration test, Shock test, Impact test, UN38.3, MSDS
Physical parameters	
Hardware	Illuminator
Weight	375g
Size	194×61.5×76mm
Software kit	PC: ThermoTools; Mobile: Thermography (iOS/Android)
Standard	A device, Wrist strap, Power adapter, Adapter plug, USB-A to USB-C Cable, Data download card, Quick Start Guide, Warranty card, Inspection report
Options	Tripod

* Product performance is based on testing in a controlled laboratory environment. Your test results may vary due to several external and environmental factors.
All specifications are subject to the actual product. The manufacturer reserves the right to modify technical specifications without notice or liability to you.