

PT II SERIES

HD High-Performance Thermal Camera

PT II series Flagship Edition Megapixel Thermal Imager of Guide Sensmart incorporates a new generation of self-developed uncooled infrared focal plane detector, achieving a resolution of up to 1280×1024. Its exclusive A/M-Focus manual/automatic hybrid focusing system delivers superior image quality and enhanced operational flexibility. The PT Series has undergone comprehensive upgrades in hardware configuration, software systems, and user experience, aiming to establish a new industry benchmark.



1-lens TwinView DFOV

IR single-lens dual-field design:
1s wide/narrow switch, no lens change for long-range inspection and close-range measurement, efficient for complex scenarios.



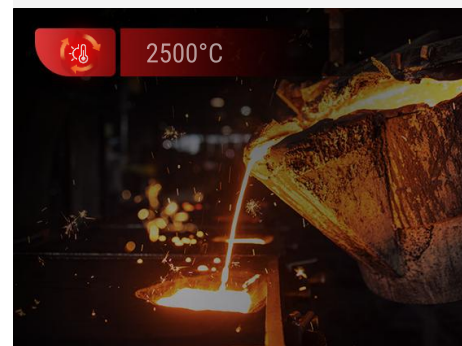
Charges to 90% in 1 Hour

Equipped with advanced fast charging tech, it takes just 1 hour to charge the battery to 90%, significantly cutting waiting time and meeting urgent - use needs efficiently.



Up to 2500°C Temperature Range

Up to 2500°C for metallurgy/furnace applications, preventing overheating with reliable protection.



50Hz Frame Rate

50Hz infrared frame rate enables real-time dynamic imaging, smoothly capturing rapid temperature changes; ideal for industrial inspection and scientific analysis, ensuring precise response and data synchronization.



5 Fast Focus Modes

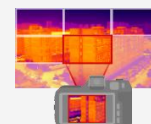
Supporting 5 focusing modes and a quick - focus system, it presents clearer images, saving time and enabling more precise temperature measurements.



Super-resolution



5.5-inch Multi-touch Screen



PerIRVision panoramic Stitching

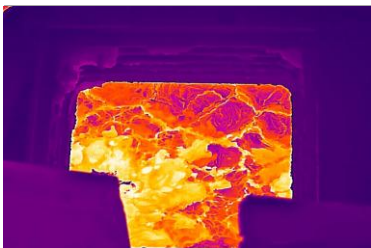


OTA Upgrade

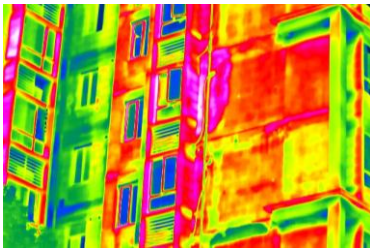
Applications



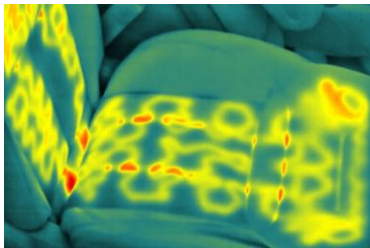
Power Industry



Industrial Inspection



Construction Industry



Scientific Analysis

Standard Package



Device



Lithium battery×2



Cradle charger



Adapter plug
(4 pcs)



Cradle charger



SD Card (128GB)



USB-A to USB-C
Cable



USB-C to USB-C
Cable



Micro HDMI to HDMI
Cable



Docking Station



Shoulder Strap



Wrist Strap




Portable package



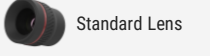
Safety Box

- Quick Start Guide
- Inspection Report
- Calibration Certificate
- Warranty Card


ADD-ON LENSES




Wide-angle Lens




Telephoto Lens




Standard Lens




Macro Lens



TwinView DFOV Lens (Standard +
Medium Telephoto)



TwinView DFOV Lens (Standard +
Wide-angle)



Medium Telephoto Lens

Specifications

| Model | | PT870S |
|--------------------------|-----------------------------|---|
| Imaging and Optics | IR Resolution | 1280*1024 |
| | SuperIR | 2560*2048 |
| | NETD | ≤15mK |
| | Image Frequency | 50Hz/9Hz |
| | Field of View (FOV) | 45°、25°、15°、7°、3X Macro、High-temperature Lens、TwinView DFOV Lens (25°+15°、25°+45°) |
| | Spatial Resolution(IFOV) | 45°:0.62mrad、 25°:0.34mrad、 15°:0.21mrad、 7°:0.09mrad |
| Image Display | Digital Camera | 8MP + 16MP, Autofocus |
| | Display | 1920*1080 Resolution, 5.5" LCD Screen |
| Measurement and Analysis | Object Temperature Range | -40°C to 150°C, 0°C to 800°C. Expandable: 400°C to 2500°C. |
| | Accuracy | ±1°C or ±1%, whichever is greater (with temperature limitation)±2°C or ±2%, whichever is greater (others) |
| General | Image and Video Formats | Radiometric JPEG, MP4 Video, Radiometric Video |
| | Wi-Fi/GPS & Compass | 802.11 b/g/n (2.4 GHz and 5 GHz)/Yes |
| | HDMI Interface | Yes |
| | Battery Operating Time | 3.5H |
| | Battery Type& Charging Time | Fast-charging, Lithium-ion battery, Charges to 90% in 1 hour(@ 20~45°C) |

Software



PC Software – ThermoTools
(Windows)



Mobile App –FocusIR
(Android/iOS)

* Product performance is based on testing in a controlled laboratory environment. Your test results may vary due to several external and environmental factors. All specifications are subject to the actual product. The manufacturer reserves the right to modify technical specifications without notice or liability to you.