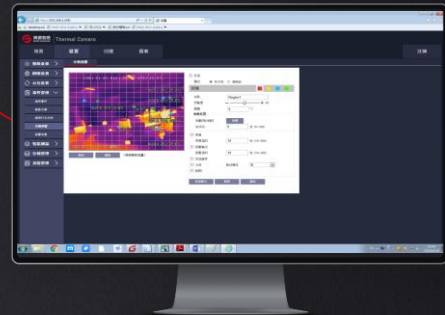


DS60xxFT-M Thermal & Optical Bi-spectrum PTZ

Long-range Inspection of Multiple Objects with All-day Monitoring



Introduction

DS60xxFT-M series is designed for medium-range indoor and outdoor monitoring and temperature measurement. The DS60xxFT-M series features 24-hour monitoring, sharp images and highly accurate temperature measurement in harsh weather conditions.



Features and Benefits

- 640×512 IR Resolution
- 25 mm/50 mm lens
- Web access for configuration
- Up to 300 presets
- Highly accurate temperature measurement, temperature analysis and alarm in real time and tracking of temperature history
- Fire detection & alarm and detection of intrusions and tripwire
- Worm gear design for highly accurate measurement and durable use

Applications

For indoor and outdoor scenes, including:

- Temperature measurement in transformer substations
- Prevention of straw burning
- Fire prevention for forests, scenic places and cultural museums
- Port and petrochemical facilities monitoring

Specifications

Model	DS6025FT-M	DS6050FT-M
Thermographic		
Detector type	VOx	
Detector resolution	640×512	
Pixel size	17μm	
Wavelength range	8μm to 14μm	
NETD	≤40mK@30°C	
Thermographic camera lenses	25mm (25°×20°)	50mm (12.4°×9.9°)
Detail enhancement	supported	
Noise reduction	2D/3D noise reduction	
Image flip	supported	
Color palette	9 (White Hot, Black Hot, Fusion, Rainbow, etc.)	
Temperature measurement		
Measurement range	Low: -20 °C to 150 °C; High: -20°C to 550°C	
Measurement accuracy	±2°C or ±2% (whichever is greater)	
Target setting	Up to 300 presets; 12 spots/lines/areas (circle, square or irregular polygon) for each preset; Measurement for up to 12 simultaneous spot + line + area for each preset	
Coldest/hottest spot tracking	supported	
Full-screen point measurement	supported	
Temperature query and export	supported	
Visible light		
Sensor type	1/1.9" CMOS	
Maximum resolution	1920x1080	
Minimum illuminance	Color: 0.001lux @ (F1.5, AGC ON); black and white: 0.0001Lux @ (F1.5, AGC ON)	
gain control	Auto/manual	
Noise reduction1	2D/3D noise reduction	
Backlight compensation	supported	
Wide dynamic range	supported	
Strong light photoinhibition	supported	
Image flip1	supported	
Exposure compensation	supported	
Lens	6mm-210mm, horizontal: 61 ° (near focus) - 2.0 ° (far focus), 1m-1.5m (near focus to far focus)	
Fill light	Infrared fill light	
Imaging		
Video compression	H.265, H.264 and MJPEG	
Image coding format	JPEG	
Code stream	Visible light: Mainstream (1920×1080, 1280×720) and Substream (1280×720, D1); Thermal: 1280 × 1024@25HZ, 640 × 512@25HZ	
Protocol and storage		
Network protocol	IPv4, HTTP, FTP, SMTP, RTSP, RTP, TCP, UDP, DHCP, ONVIF and GB/T28181	
Sdk/api	Open API/SDK for software integration	
Local storage	32G TF card	
System function		
Languages	Chinese/English	
Browser	supported	
User management	Max. 20 users with two levels of user accounts (Admin and User)	
Fault detecti	Network disconnection, IP conflict, encoder status, memory card status and storage space	
Hardware interface		
Power interface	AC 24V	
Network interface	One 100M/1,000M Ethernet port	
Alarm interface	1 input and 1 output	
Other interface	1-channel RS485, audio 1 in 1 out	
Environmental		
Operating temperature	-40°C to +65°C	
Operating humidity	≤ 90%, non-condensing	
Encapsulation	IP66	
Physical		
Product size (l×w×h)	≤390mm × 278mm ×537mm	
Net weight	≤16.35kg	
Power consumption	< 120W	
Installati	Customized bracket	

