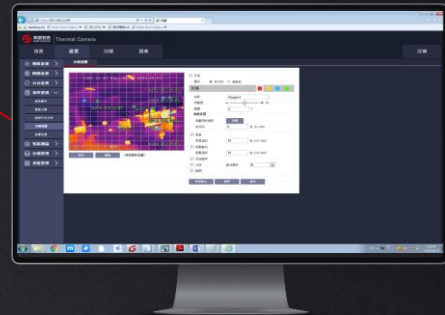


DS60xxFT-P

Thermographic Thermal & Optical Bi-spectrum Network Speed Dome



Introduction

DS60xxFT-P series is mainly used in medium-range indoor and outdoor monitoring and temperature measurement application scenarios. The product uses vanadium oxide uncooled infrared detectors, which are not affected by the light environment, and can achieve 24-hour remote monitoring and high-precision temperature measurement. Built-in deep learning pyrotechnic recognition algorithm, with fire detection and alarm functions.



Features and Benefits

- Web-side control, no other client software is required for parameter configuration
- With high-precision temperature measurement and early warning functions, fire detection and alarm functions
- Up to 300 temperature measurement preset points can be set
- Each preset point can set 12 temperature measurement objects at the same time
- Support real-time temperature analysis, historical temperature information query function
- Various behavior analysis functions such as tripwire intrusion, region intrusion etc.

Application

Suitable for medium-range indoor and outdoor scenes, such as temperature measurement in transformer substations, short-distance straw burning ban, fire prevention in scenic cultural museums, etc.

Specifications

Model	DS6013FT-P	DS6025FT-P	DS6050FT-P
Thermographic parameters			
Detector type	VOx		
Detector resolution	640×512		
Pixel size	17μm		
Wavelength range	8μm~14μm		
NETD	≤40mK@30°C		
Thermographic camera lenses	13mm, 45.4° × 37°	25mm, 25°×20°	50mm, 12.4°×9.9°
Detail enhancement	Available		
Noise reduction	2D/3D noise reduction		
Image flip	Available		
Pseudo color	9 pseudo colors: White Hot, Black Hot, Fulgurite, Rainbow and so on		
Temperature measurement parameters			
Measurement range	Low temperature mode: -20 °C to 150 °C, high temperature mode: -20°C to 550°C		
Measurement accuracy	±2°C or ±2% (whichever is greater)		
Target setting	Multi-preset-point temperature measuring, up to 300 temperature measuring preset points; For each preset point: spot temperature measuring: 12 spots, area temperature measuring: 12 areas, linear temperature measuring: 12 lines; Up to 12 simultaneous objects		
Cold/hot spot tracking	Available		
Full-screen point temperature measuring	Available		
Query and export of temperature measuring informati	Available		
Visible light parameters			
Sensor type	1/1.9" CMOS		
Maximum resolution	1920x1080		
Minimum illuminance	Color: 0.001lux @ (F1.5, AGC ON) black and white: 0.0001Lux @ (F1.5, AGC ON)		
Visible light gain control	Auto/manual		
Visible light noise reduction	2D/3D noise reduction		
Backlight compensation	Available		
Wide dynamic	Available		
Strong-light photoinhibition	Available		
Image flip1	Available		
Exposure compensation	Available		
Visible light lens	6mm-210mm, horizontal: 61° (near focus) - 2.0° (far focus), 1m-1.5m (near focus to far focus)		
Fill light	Infrared fill light		
Image parameter			
Video compression standard	Switch between three standards H.265, H.264 and MJPEG		
Image coding formats	JPEG		
Code stream	Visible light Mainstream(1,920×1,080, 1,280×720) ; Visible light Substream(1280×720, D1) ; Thermal image stream 1,280 × 1,024@25Hz, 640 × 512@25Hz		
Protocol and storage			
Network protocol	IPv4,HTTP ,FTP,SMTP ,RTSP,RTP,TCP,UDP,DHCP ,ONVIF,GB/T28181 IPv4, HTTP, FTP, SMTP, RTSP, RTP, TCP, UDP, DHCP, ONVIF, GB/T28181		
Sdk/api	Open API/SDK for software integration		
Local storage	32G TF card		
System function			
Language version	Chinese/English		
Browser	Available		
User management	It supports up to 20 users and multi-level user permission management; which is divided into three levels: root user, management group and user group		
Fault detecti	Network disconnection detection, IP conflict detection, encoder status detection, memory card status detection, storage space detection		
Hardware interface			
Power interface	AC 24V/3A±15%		
Network interface	One 100M/1,000M Ethernet port		
Alarm interface	1 input and 1 output		
Other interface	1-channel RS485, audio 1 in 1 out		
Environmental parameters			
Working temperature	-40°C to +60°C		
Working humidity	≤ 95%, non-condensing		
Encapsulation	IP66		
Physical parameters			
Product size	≤ Φ237mm*355mm		
Net weight	≤5kg		
Power consumption	<20W		
Installation mode	Wall mounting/ceiling mounting		

Dimensions

