

# T Series

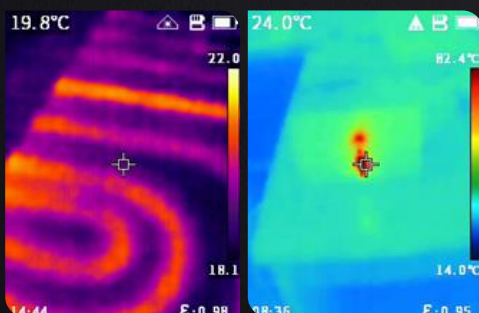
Entry-level Portable Thermal Camera

See the heat of 10,800 pixels in 1 second



## Introduction

T Series Entry-level Thermal Image Camera is an affordable temperature measuring tool widely used for building diagnostics, HVAC inspections, electrical system inspections and more. It perfectly overcomes the shortcomings of the single spot infrared thermometers and helps work smarter, safer and faster. Equipped with Guide's self-developed 120x90 WLP IR modules, T120 series thermal cameras can display radiometric data of 10,800 pixels instantly which helps quickly detect large areas and pinpoint fault spots accurately.



## Features and Benefits

- Boot-up in 1 second  
Boot up and display fully radiometric image instantly  
Full screen max & min temperature alarm
- 2.4 inch Large Display  
240x320 pixel Color LCD
- Good-handle Buttons  
Ergonomic design  
Easy to operate even wear the gloves
- 8-hour Battery Life  
Low power consumption  
Large capacity battery
- 2-hour Quick Charge  
USB Type-C Interface  
High power quick charge
- IR/Visible/Laser Indicator  
Pinpoint targets precisely
- Trigger Button  
Trigger button for photo taking
- Rugged Design  
2-meter Drop Test, IP54  
Encapsulation

## Application

- Building Diagnostics
- HVAC Inspection
- Facilities maintenance
- Electrical Application

## Specifications

Model	T120	T120V
<b>Imaging and optics</b>		
Detector type	VOx	
Infrared resolution	120 × 90@17μm	
Wavelength range	7.5 to 14μm	
Focal length	2.28 mm	
Field of view	50° × 38°	
Minimum object distance	0.5 m	
D:S	130:1	
NETD	≤60 mK	
Infrared frame rate	25 Hz / 9 Hz	
Focusing mode	Focus-free	
<b>Measurement and analysis</b>		
Measurement range	Support auto-switching: -20°C to 150°C, 100°C to 400°C	
Measurement accuracy	±2°C or ±2%, whichever is greater	
Analyzed target	Center spot and 3 areas	
Tracking / Alarm	Full screen maximum/minimum temperature tracking; The maximum or minimum temperature tracking of analyzed target; full screen temperature threshold alarm (image)	
Temperature measuring parameters	Emissivity, reflected temperature, target distance	
<b>Image display</b>		
Display screen	2.4" LCD	
Digital camera	/	70,000 pixels
Image mode	IR	IR, VIS and PIP
Image adjustment	Automatic	
Color palettes	Iron Red, White Hot, Arctic, Rainbow 2, Hot Iron, Rainbow 1	
<b>Storage and transmission</b>		
Storage media	TF card (16 GB and up to 32 GB)	
Image storage format	JPG with temp info	
External interface	TYPE-C, TF card slot, UNC ¼"-20 (tripod mounting)	
Laser	645~655nm, Class 2 laser, < 1mW, only indicating the measured target	
WIFI	/	Yes, it can be connected to the mobile terminal for image transmission
<b>Power system</b>		
Battery type	Rechargeable lithium-ion battery, non-removable	
Battery working time	≥8 hours	≥5 hours
Power management	Timed shutdown and sleep mode	
Charging mode	TYPE-C charging; PC/portable charger; Capable of charging while using	
Charging time	90% of full charge in 2.5 hours	
<b>Environmental parameters</b>		
Working temperature	-10°C to 50°C	
Storage temperature	-40°C to 70°C	
IP rating	IP54	
Drop	2m drop test	
Certification	CE, FCC, ROHS, KCC, IP54, 2m drop test, Damp heat test, Vibration test, Shock test, Impact test, UN38.3, MSDS	
<b>Physical parameters</b>		
Weight	≤350 g	
Size (L × W × H)	194 × 61.5 × 76 mm	
Software kit	ThermoTools	
Standard	A device, Wrist strap, Quick Start Guide, Power adapter, Adapter plug, Type-C USB cable, Data download card, TF card (16 GB), Certificate of approval	
Options	Tripod	

