



GUIDE

Clearer And Longer Operating

PC Series Tool-like Thermal camera

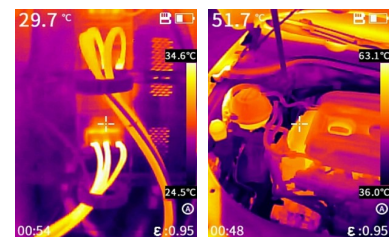
Introduction

PC Series, Tool-like Handheld Thermal Camera, With excellent performance in image quality and charging battery life , This Thermal Camera adopts 256x192 IR Detector and 200W pixel visible light . Adopts the New SharpIR composite image enhancement technology, it can provide you with detailed infrared thermal imaging and dual-light fusion images to help you find potential faults more quickly.

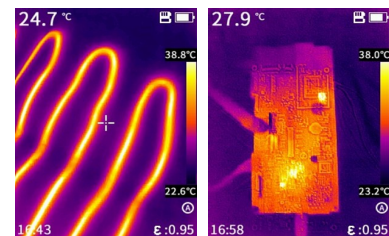
Features

- Adopts 256x192 infrared module with Excellent imaging quality
- 16H Operating time, 2.5H fast charge, easy to cope with two days of work
- Turn on in 1 second And Use, full-frame temperature measurement
- Rugged and Durable, Resistant to 2 meters drop, IP54 Protection Rating
- 4 image modes, And all palettes can display the temperature
- Wide temperature measurement range, -20°C~550°C, Automatic Switch
- Type C interface, Easy to transfer data And support PC screen projection

Applications



Electrical Application Facilities maintenance



HVAC Inspection PCBA detection

Specifications

Product model	PC210	PC230
Imaging and optics		
Detector type	VOx, 7.5 to 14μm	
Infrared resolution	256×192@12μm	
NETD	45mK	
Frame rate	25Hz/ 9Hz	
Focal length	3.2mm	7mm
Field of view	56°×48°	25°×19°
IFOV	3.75mrad	1.71mrad
Min. object distance	0.3 m	0.5 m
D:S	266:1	585:1
Focusing mode	Focus-free	Automatic
Measurement and analysis		
Measurement range	Support auto-switching: -20°C to 150°C, 100°C to 550°C	
Measurement accuracy	±2°C or ±2%, whichever is greater	
Analyzed target	Center spot; Three Fixed Areas: Small, Medium, Large (Alternative)	
Alarm	Full screen temperature threshold alarm (image and flash)	
Parameter settings	Emissivity, reflected temperature, target distance	
Image display		
Display screen	2.4" LCD	
Image mode	IR, VIS, MIF and PIP	
Color palettes	6: Iron Red, White Hot, Arctic, Rainbow 2, Hot Iron, Rainbow 1	
Image adjustment	Level span mode: Automatic, Semi-automatic, Manual	
Digital camera	2 MP	
Functions		
Laser	Laser Indicator	
Recording function	Photo	
Storage and transmission		
Storage media	TF card (32 GB)	
Image storage	JPG with temp info	
External interface	TYPE-C, TF card slot, UNC ¼"-20 (tripod mounting)	
Power system		
Battery type	Rechargeable lithium-ion battery, non-removable	
Operating time	16 hours	
Charging mode	TYPE-C charging; PC/portable charger; Capable of charging while using	
Charging time	90% of full charge in 2.5 hours	
Environmental parameters		
Working temperature	-15°C to 50°C	
IP rating	IP54	
Drop	2m drop test	
Certification	CE, FCC, ROHS, KCC, IP54, 2m drop test, Damp heat test, Vibration test, Shock test, Impact test, UN38.3, MSDS	
Physical parameters		
Hardware	Illuminator	
Weight	375g	
Size	194×61.5×76mm	
Software kit	PC: ThermoTools	
Standard	A device, Wrist strap, Quick Start Guide, Power adapter, Adapter plug, Type-C USB cable, Data download card, TF card (32 GB) , Certificate of approval	
Options	Tripod	