



Operating with great facility

PF Series Pocket-sized Thermal Camera

GUIDE

Introduction

The PF Series pocket-sized thermal camera is a non-contact inspection tool for diagnosing problems and finding hidden deficiencies of electrical equipment, thanks to its 256 × 192 pixel infrared detector, -20°C to 550°C temperature range, 5 MP visible light camera and 3.5-inch LCD touchscreen. The extraordinary thermal imaging detail, easy operation and built-in Wi-Fi allow users to quickly and easily share the professional reports that document the problem.

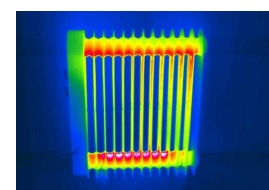
Features

- The 256x192 infrared detector produces crisp imagery
- The IR, VIS, PIP and MIF reveal temperature details
- -20°C to 550°C temperature range with auto-switching capability
- Laser ranging and intelligent area calculation of rectangle objects
- Fast image lookback and search for desired functions
- 4 hours of operation and standard Type-C for fast charging

Applications



Electrical Application



HVAC Inspection

Specifications

Product model	PF210
Imaging and optics	
Detector type	VOx, 7.5 to 14μm
Infrared resolution	256×192@12μm
NETD	45mK
Frame rate	25Hz/ 9Hz
Focal length	3.2mm
Field of view	56°×48°
IFOV	3.75mrad
Min. object distance	0.3 m
D:S	266:1
Focusing mode	Focus-free
Digital zoom	1.1x to 8x
Measurement and analysis	
Measurement range	Support auto-switching: -20°C to 150°C, 100°C to 550°C
Measurement accuracy	±2°C or ±2%, whichever is greater
Analyzed target	Spot×2 (Include Center spot), Area×3
Alarm	Full screen temperature threshold alarm (image and flash)
Parameter settings	Emissivity, reflected temperature, target distance
Others	Intelligently calculate the area
Image display	
Display screen	3.5" LCD
Image mode	IR, VIS, MIF and PIP
Color palettes	6: White Hot, Black Hot, Iron Red, Hot Iron, Rainbow, Arctic
Image adjustment	Level span mode: Automatic, Semi-automatic, Manual
Digital camera	5 MP
Functions	
Laser	Laser (Indication, Ranging)
Recording function	Photo
Cloud Services	Available
Others	Customized physical button×2
Storage and transmission	
Storage media	Built-in (16 GB)
Image storage	JPG with temp info
External interface	TYPE-C, UNC ¼"-20 (tripod mounting)
WIFI	Yes, it can be connected to the mobile terminal for image transmission
Power system	
Battery type	Rechargeable lithium-ion battery, non-removable
Operating time	4 hours
Charging mode	TYPE-C charging; PC/portable charger; Capable of charging while using
Charging time	90% of full charge in 2.5 hours
Environmental parameters	
Working temperature	-10°C to 50°C
IP rating	IP54
Drop	1m drop test
Certification	CE, FCC, ROHS, KC, Anatel, IP54, 1m drop test, Damp heat test, Vibration test, Shock test, Impact test, UN38.3, MSDS
Physical parameters	
Hardware	Illuminator
Weight	296g
Size	138×89×34mm
Software kit	PC: ThermoTools; Mobile: Thermography (iOS/Android)
Standard	A device, Wrist strap, Carrying bag, Quick Start Guide, Power adapter, Adapter plug, Type-C USB cable, Data download card, Certificate of approval
Options	Tripod