



GUIDE

Refresh the temperature record at 30Hz

Hammer Series Intelligent Thermal Camera

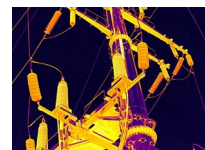
Introduction

With a built-in self-developed high-sensitivity IR detector with a maximum resolution of 640x480, a 13MP visible light camera, and 5 focusing modes, Hammer Series, the high-precision thermal camera designed specifically for the industrial field helps users intuitively view high-definition images and temperature details of the target, with the classic "hammer" shape. 30Hz Frame rate for fast and accurate access to more temperature data of moving targets, far beyond the same level of products.

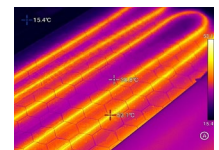
Features

- The new generation of self-developed IR detectors with a maximum resolution of 640x480
- ASIC algorithms for pixel point details and hidden hazards
- A 13MP visible light camera and dual illumination for easy location of faults
- Up to 30Hz IR video frame rate for temperature analysis by the screenshot
- IP54 waterproof and dustproof and 2m drop resistance
- OTA online upgrades to keep the device in top shape
- Built-in WIFI module for easy transfer of images to the cloud and remote instant download and analysis

Applications



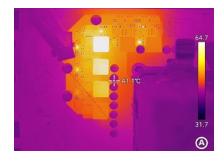
Power



HVAC



Oil and Petrochemical



Electronic Information

Specifications

Product model	H2	H3	H3+	H4	H6
Imaging and optics					
Detector type	VOx, 7.5 to 14μm				
Infrared resolution	256×192@12μm	320×240@12μm	384×288@12μm	480×360@12μm	640×480@12μm
Super resolution	Yes, Upgrade to 512×384	Yes, Upgrade to 640×480	Yes, Upgrade to 768×576	Yes, Upgrade to 960×720	Yes, Upgrade to 1280×960
NETD	45mK				40mK
Frame rate	30Hz/9Hz				
Focal length	10.5mm			17.7mm	
Field of view	25°×19°				
IFOV	1.70mrad	1.36mrad	1.13mrad	0.91mrad	0.68mrad
Min. object distance	0.1m		0.15m		
D:S	588:1	735:1	885:1	1099:1	1470:1
Focusing mode	Manual / Automatic / Touch autofocus / Continuous autofocus				
Digital zoom	1.1x to 8x		1.1x to 10x	1.1x to 16x	1.1x to 20x
Measurement and analysis					
Measurement range	Support auto-switching: -40°C to 150°C, 0°C to 650°C	Support auto-switching: -40°C to 150°C, 0°C to 650°C, Optional 500°C to 2000°C (High temperature lens is required)			
Measurement accuracy	±2°C or ±2%, whichever is greater				
Analyzed target	5 in total (Spot/Line/Area)	8 in total (Spot/Line/Area)	10 in total (Spot/Line/Area)	12 in total (Spot/Line/Area)	16 in total (Spot/Line/Area)
Alarm	Full screen temperature threshold alarm (image, voice and flash)				
Parameter settings	Emissivity, reflected temperature, target distance, humidity, atmospheric temperature, optical transmittance, dew point				
Others	Isothermals, Intelligently calculate the area			Isothermals, Smart Stroke, Intelligently calculate the area	
Image display					
Display screen	4.3" LCD, touch screen, 800×480				
Image mode	IR, VIS, MIF, PIP				
Color palettes	15: White Hot, Iron Red, Arctic, Rainbow 2, Hot Iron, Rainbow 1, Fulgurite, Medical, Tint, Black Hot, Blue Hot, Sepia, Green Hot, Ice and Fire, Amber			15: White Hot, Iron Red, Arctic, Rainbow 2, Hot Iron, Rainbow 1, Fulgurite, Medical, Tint, Black Hot, Blue Hot, Sepia, Green Hot, Ice and Fire, Amber; Customized	
Image adjustment	Level span mode: Automatic, Semi-automatic, Manual				
Digital camera	5MP		8MP		13MP
Functions					
Laser	Laser (Indication, Ranging 0.1m to 40m)				
Recording function	Photo and Video		Photo (image stitching) and Video	Photo (image stitching) and Video (infrared & visible light)	
Cloud Services	Available				
Others	Customized physical button, Intelligent diagnosis, OTA update				
Storage and transmission					
Storage media	Built-in (64 GB) and external SD card (64 GB and up to 256 GB)				
Image storage	JPG with temp info				
Video storage	MP4 format (without temp info) can be used to record audio synchronously; Irgd (with temp info), up to 30 Hz (optional) for temperature analysis				
External interface	Type-C, SD card slot, UNC ¼"-20 (Tripod mounting)				
WIFI	Yes, it can be connected to the mobile terminal for image and real-time video transmission				
Bluetooth	Bluetooth 5.0, support image transmission (only for Android)				
Power system					
Battery type	Lithium-ion rechargeable battery				
Operating time	5 hours			4 hours	
Charging mode	TYPE-C charging; PC/portable charger; Capable of charging while using				
Charging time	90% of full charge in 2.5 hours				
Environmental parameters					
Working temperature	-20°C to 50°C				
IP rating	IP54				
Drop	2m drop test				
Certification	CE, FCC, RoHS, KCC, Anatel, Damp heat test, Vibration test, Shock test, Impact test, UN38.3, MSDS				
Physical parameters					
Hardware	Illuminator×2, Microphone, Speaker, Electronic Compass, GPS				
Weight	1.2kg (with battery)				
Size	292×125×125mm				
Software kit	PC: ThermoTools; Mobile: Thermography (iOS/Android)				
Standard	A device (with lens), Lens front and back cover, Lithium-ion battery (2 pcs), Power adapter, Adapter plug (for China, US, UK, Australia and Europe), Type C to C Charger Cable, TYPE-C USB cable, Ethernet Cable, TYPE-C to RJ45, SD card (64 GB), Wrist strap, Shoulder strap, Safety box, Packaging list, Quick Start Guide, Data download card (analysis software & user manual), Certificate of approval, Factory certificate			A device (with lens), Lens front and back cover, Lithium-ion battery (2 pcs), Desktop charger, Power adapter, Adapter plug (for China, US, UK, Australia and Europe), Type C to C Charger Cable, TYPE-C USB cable, Ethernet Cable, TYPE-C to RJ45, SD card (64 GB), Wrist strap, Shoulder strap, Safety box, Packaging list, Quick Start Guide, Data download card (analysis software & user manual), Certificate of approval, Factory certificate	
Options	Desktop charger, Battery, Optional lens (44°, 15°, 7°), Carrying bag, Tripod, Bluetooth earphone, Docking station	Desktop charger, Battery, Optional lens (44°, 15°, 7°, high-temperature lens), Carrying bag, Tripod, Bluetooth earphone, Docking station		Battery, Optional lens (44°, 15°, 7°, high-temperature lens, macro lens), Carrying bag, Tripod, Bluetooth earphone, Docking station	

* Product performance is based on testing in a controlled laboratory environment. Your test results may vary due to several external and environmental factors. All specifications are subject to the actual product. The manufacturer reserves the right to modify technical specifications without notice or liability to you.