

# GUIDE

## The World's First AutoFocus Thermal Imager for Smartphone

**MobIR 2** Thermal Camera for Smartphone

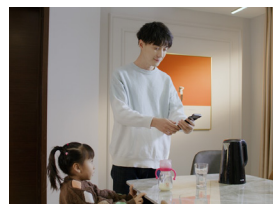
### Introduction

MobIR 2 series is a new generation of infrared thermal imager for smartphone launched by Guide. Built-in the world's first autofocus WLP infrared module, with higher resolution and performance comparable to professional thermal imaging cameras. This product allows you to see things that you can't see with the naked eye, It can realize real-time temperature measurement, night vision, photography, video and other functions through the mobile phone APP.

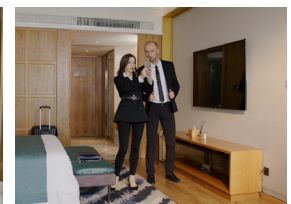
### Features

- 256x192 resolution, Autofocus, Clearly no matter near or far
- Type-C interface, Battery-free design, plug and play
- $\pm 2^{\circ}\text{C}$  industrial-grade temperature measurement accuracy
- Outdoor night vision recognition range is more than 100 meters
- Multifunctions, complete APP functions, share at any time

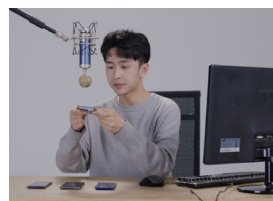
### Applications



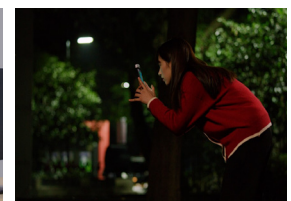
House Inspection



Privacy Protection



Evaluation tool

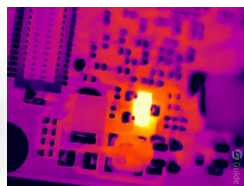


Outdoor Night Vision

## Specifications



Product model	MobIR 2T	MobIR 2S	MobIR 2S (Macro Lens)
<b>Infrared detector</b>			
Detector type		VOx	
Infrared resolution		256×192@12 μm	
Wavelength range		7.5 to 14 μm	
Frame rate		25 Hz	
<b>Lens</b>			
Focal length	3.2 mm		7 mm
Field of view	56°		25°
Focusing mode	Automatic/Electric		
<b>Temperature measurement</b>			
Measurement range	Industrial measurement: -20°C to 150°C; Human body: 20°C to 50°C	-20°C to 150°C	
Measurement accuracy	Industrial measurement range: ±2°C or ±2%, whichever is greater; Human body: ±0.5°C (Temperature Measurement Distance: 0.5-2.5m)	±2°C or ±2%, whichever is greater	
Measurement	Spot, line, area		
Macro function	/		Available*
<b>Detection range</b>			
Human: 1.8×0.5 m	/	100m	/
<b>APP Functions</b>			
Photo	Available		
Video	Available		
Color palettes	9 and 1 customized		
Instant sharing	Images, videos		
<b>Power system</b>			
Power supply	4.5V to 5.5 V		
Power consumption	500 mW		
<b>Environmental parameters</b>			
Working temperature	-10°C to 60°C		
IP rating	IP43		
Drop	1m drop test (without the type-c interface)		
Certification	CE, FCC, RoHS		
<b>Physical parameters</b>			
External interface	USB Type-C male		
Weight	≤35 g	≤40 g	≤50 g
Size	59×24×16 mm	59×24×20 mm	
Color	Silver/Grey		
Standard	A device, Carrying box, Wrist strap, User manual, Certificate of approval		A device, Carrying box, Wrist strap, User manual, Certificate of approval, Macro Lens



*MobIR 2S Macro function				
Magnification	5X		10X	
Observed altitude(mm)	48.75	93.16	40.23	72.71
Visual range(mm)	20.26×15.2	38.33×28.75	15.87×11.9	29.95×22.46

\* Product performance is based on testing in a controlled laboratory environment. Your test results may vary due to several external and environmental factors. All specifications are subject to the actual product. The manufacturer reserves the right to modify technical specifications without notice or liability to you.